



Flight Plan & Site Survey

Created using **RPAS Wilco**®

Operation Name:	NCRCFS Roosevelt park
Pilot Name:	██████████
Pilot Certificate:	██████████
Flight Start:	February 12, 2023 4:26 PM
Flight End:	February 12, 2023 6:26 PM
Flight Area (Latitude):	54° 18' 20.51" N (54.306)
Flight Area (Longitude):	130° 19' 39.70" W (-130.328)
Altitude - Radius:	Alt: 400 ft - Rad: 555.6 m (0.3 nm)
Airspace:	CERT
FIR - Contact:	CZVR - 604-586-4500
Weather:	5.8 Celsius - Snow, Rain, Overcast

Please ensure you received all required authorizations prior to flight.

Disclaimer

This Site Survey was created using RPAS Wilco by AIM Robotics. The flight plan contained is intended only for RPAS flights on the date/time and location specified. The user accepts all responsibility for the accuracy and completeness of the information contained.

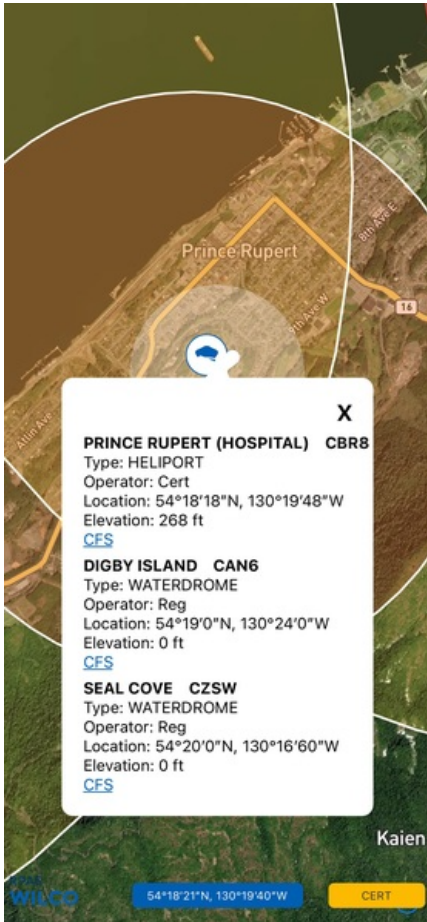
For the complete Terms & Conditions, see

<https://rpswilco.com/#/tnc>



Included

- Site Survey
- Obstacles (if available)
- Nearby Aerodromes
- Canadian Aviation Regulations
- GFA
- Aerodrome Supplements
 - METAR & TAF (if available)
 - NOTAMs
 - CFS

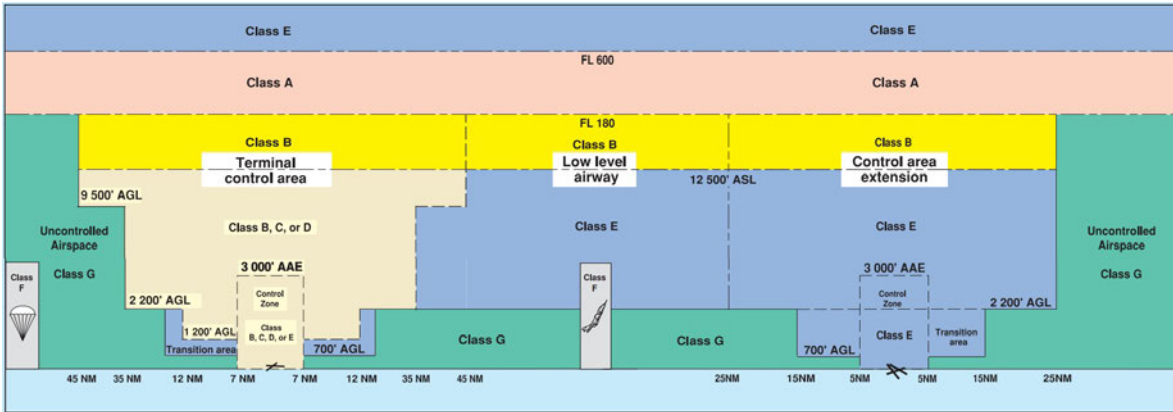
Flight Map



MAP Details

	Latitude	Longitude
 MODEL	54° 18' 20.51" N (54.306)	130° 19' 39.70" W (-130.328)
 Pilot	54° 18' 24.11" N (54.3067)	130° 19' 43.30" W (-130.3287)

Airspace Classification



Overlying Airspaces

Class	Name	Floor	Ceiling
E	Prince Rupert, BC CAE	2200AGL	12500MSL
B	Prince Rupert, BC CAE	12500MSL	18000MSL
B	A10 Airway	12500MSL	18000MSL
E	A10 Airway	2200AGL	12500MSL
E	Prince Rupert, BC TA	700AGL	12500MSL
B	Prince Rupert, BC TA	12500MSL	18000MSL
B	R35 Airway	12500MSL	18000MSL
E	R35 Airway	2200AGL	12500MSL
E	T664 Airway	2200AGL	12500MSL
B	T664 Airway	12500MSL	18000MSL
E	T785 Airway	2200AGL	12500MSL
B	T785 Airway	12500MSL	18000MSL
E	Prince Rupert CZ	700AGL	3000AGL

Nearest Aerodromes & Distance from Operation

SEAL COVE (CZSW WATERDROME Reg)	Lat: 54.333	Long: 130.283	4.198 KM	2.27 NM
DIGBY ISLAND (CAN6 WATERDROME Reg)	Lat: 54.317	Long: 130.4	4.856 KM	2.62 NM
PRINCE RUPERT (CYPR AERODROME Cert)	Lat: 54.286	Long: 130.444	7.859 KM	4.24 NM

Weather Information for Mission Day

Summary: Cloudy skies throughout the day with a chance of rain or snow throughout the day.

Condition	Temperature	Feels Like	Precipitation	Visibility	Cloud Coverage	Wind Speed	Humidity
Snow, Rain, Overcast	5.8 Celsius	1.3 Celsius	100.0 %	8.7 Km	94.2 %	37.4 kph	89.3 %

Canadian Aviation Regulations

Division III — General Operating and Flight Rules

For full listing please visit <https://laws-lois.justice.gc.ca/eng/regulations/SOR-96-433/FullText.html#s-901.27>

Visual Line-of-sight

- **901.11 (1)** Subject to subsection (2) no pilot shall operate a remotely piloted aircraft system unless the pilot or a visual observer has the aircraft in visual line-of-sight at all times during flight.
- **(2)** A pilot may operate a remotely piloted aircraft system without the pilot or a visual observer having the aircraft in visual line-of-sight if the operation is conducted in accordance with a special flight operations certificate — RPAS issued under section 903.03.

Procedures

- **901.23 (1)** No pilot shall operate a remotely piloted aircraft system unless the following procedures are established:
 - **(a)** normal operating procedures, including pre-flight, take-off, launch, approach, landing and recovery procedures; and
 - **(b)** emergency procedures, including with respect to
 - **(i)** a control station failure,
 - **(ii)** an equipment failure,
 - **(iii)** a failure of the remotely piloted aircraft,
 - **(iv)** a loss of the command and control link,
 - **(v)** a fly-away, and
 - **(vi)** flight termination.
- **(2)** If the manufacturer of the remotely piloted aircraft system provides instructions with respect to the topics referred to in paragraphs (1)(a) and (b), the procedures established under subsection (1) shall reflect those instructions.
- **(3)** No pilot shall conduct the take-off or launch of a remotely piloted aircraft unless the procedures referred to in subsection (1) are reviewed before the flight by, and are immediately available to, each crew member.
- **(4)** No pilot shall operate a remotely piloted aircraft system unless the operation is conducted in accordance with the procedures referred to in subsection (1).

Site Survey

901.27 No pilot shall operate a remotely piloted aircraft system unless, before commencing operations, they determine that the site for take-off, launch, landing or recovery is suitable for the proposed operation by conducting a site survey that takes into account the following factors:

- **(a)** the boundaries of the area of operation;
- **(b)** the type of airspace and the applicable regulatory requirements;
- **(c)** the altitudes and routes to be used on the approach to and departure from the area of operation;
- **(d)** the proximity of manned aircraft operations;
- **(e)** the proximity of aerodromes, airports and heliports;
- **(f)** the location and height of obstacles, including wires, masts, buildings, cell phone towers and wind turbines;
- **(g)** the predominant weather and environmental conditions for the area of operation; and
- **(h)** the horizontal distances from persons not involved in the operation.

Operations at or in the Vicinity of an Aerodrome, Airport or Heliport

- **901.47 (1)** No pilot shall operate a remotely piloted aircraft at or near an aerodrome that is listed in the *Canada Flight Supplement* or the *Water Aerodrome Supplement* in a manner that could interfere with an aircraft operating in the established traffic pattern.
- **(2)** Subject to section 901.73 no pilot shall operate a remotely piloted aircraft at a distance of less than
 - **(a)** three nautical miles from the centre of an airport; and
 - **(b)** one nautical mile from the centre of a heliport.
- **(3)** No pilot shall operate a remotely piloted aircraft at a distance of less than three nautical miles from the centre of an aerodrome operated under the authority of the Minister of National Defence unless the operation is conducted in accordance with a special flight operations certificate — RPAS issued under section 903.03.

Records

- **901.48 (1)** Every owner of a remotely piloted aircraft system shall keep the following records:
 - **(a)** a record containing the names of the pilots and other crew members who are involved in each flight and, in respect of the system, the time of each flight or series of flights and
 - **(b)** a record containing the particulars of any mandatory action and any other maintenance action, modification or repair performed on the system, including
 - **(i)** the names of the persons who performed them,
 - **(ii)** the dates they were undertaken,
 - **(iii)** in the case of a modification, the manufacturer, model and a description of the part or equipment installed to modify the system, and
 - **(iv)** if applicable any instructions provided to complete the work.
- **(2)** Every owner of a remotely piloted aircraft system shall ensure that the records referred to in subsection (1) are made available to the Minister on request and are retained for a period of
 - **(a)** in the case of the records referred to in paragraph (1)(a), 12 months after the day on which they are created; and
 - **(b)** in the case of the records referred to in paragraph (1)(b), 24 months after the day on which they are created.
- **(3)** Every owner of a remotely piloted aircraft system who transfers ownership of the system to another person shall, at the time of transfer, also deliver to that person all of the records referred to in paragraph (1)(b).

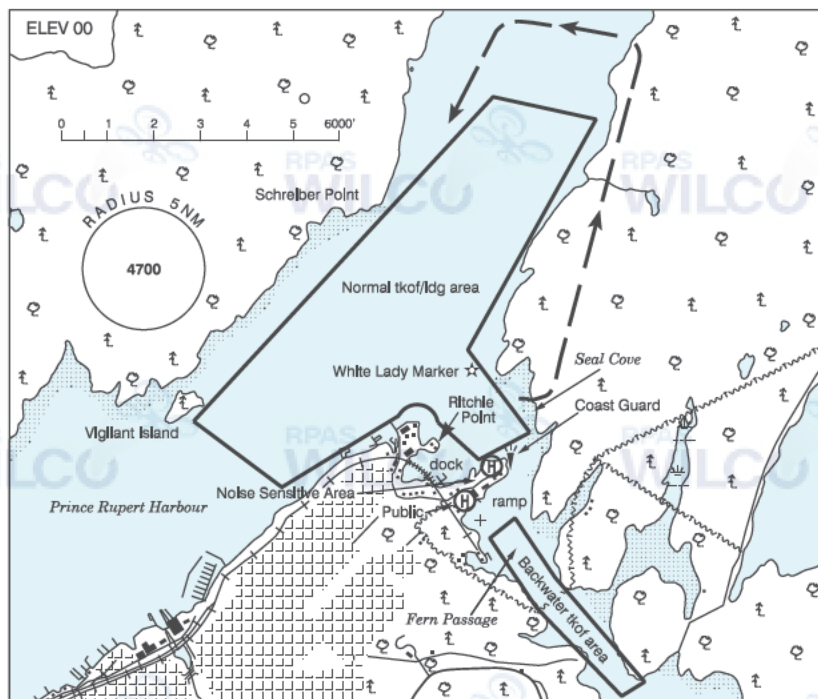
CANADA WATER AERODROME SUPPLEMENT

Effective 0901Z 24 March 2022 to 0901Z 20 April 2023

B176 AERODROME/FACILITY DIRECTORY

PRINCE RUPERT / SEAL COVE BC

CZSW



REF	N54 20 W130 17 Adj NE 20°E (2012) UTC-8(7) Elev 00' A5013
OPR	Seal Cove Airport Society 250-624-2321 Reg
PF	A-1,3 C-2,4,5,6
CUST	AOE/15 888-226-7277
FLT PLN	
FIC	Kamloops 866-WXBRIEF (Toll free within Canada) or 866-541-4101 (Toll free within Canada & USA)
SERVICES	Avbl May-Sep 15-04Z±. Oct-Apr daylight hrs only. Callout chgs may apply. After hrs svcs call 250-624-1737.
FUEL	100LL
S	1,2,3,4,5
A/D DATA	Tidal range 26', current 2-3 kt. Floats & ramp. Win: Ocls 3' swells & chop. Sum: Frequent glassy water.
DOCKS	Mooring fees.
COMM	
RCO	Pacific rdo 123.275 (FISE) 126.7 (bcst)
MF	ffc 122.5 irregular shape see Prince Rupert VTPC 3100 ASL (CAR 602.98)
NAV	
NDB	Nav aids unmonitored when FSS clsd. PR 218 (M) N54 15 48 W130 25 26

CANADA WATER AERODROME SUPPLEMENT

Effective 0901Z 24 March 2022 to 0901Z 20 April 2023

AERODROME/FACILITY DIRECTORY B177

PRINCE RUPERT/SEAL COVE BC (Cont'd)

CZSW

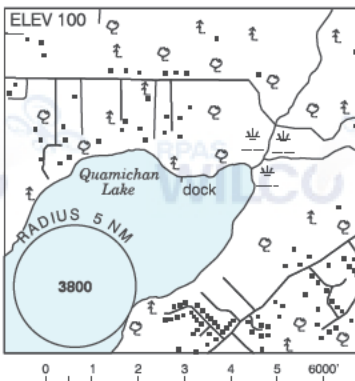
PRO	See Prince Rupert VTPC. ARRIVAL: Rpt by inbd call-up pt on tfc freq and advs routing and destn. Remain on tfc freq until landed. DEPARTURE: Advs obd rte and remain on tfc freq until clear of inbd call-up points.
CAUTION	Prince Rupert CZ adj. See VTPC. Extv air tfc to/fr Port Simpson via Tuck Inlet. Log-booming - debris in area. Extv boat tfc in Fern Passage.

PUMPKIN BAY ON — See ORILLIA/PUMPKIN BAY

QUAMICHAN LAKE (RAVEN FIELD) BC

CRF6

REF	N48 48 30 W123 39 00 2.9NNE 17°E (2014) UTC-8(7) Elev 100' VTA A5004
OPR	John F Howroyd 250-889-5770 Reg PPR
PF	B-1 C-2,3,4,5,6
FLT PLN	FIG Kamloops 866-WXBRIEF (Toll free within Canada) or 866-541-4101 (Toll free within Canada & USA)
A/D DATA	Virtually ice free, non-tidal, max dep h 24' crushed rock, depth at dock 5', 4 moorings 2x20' floats and gangway.
COMM	ATF tfc 122.8 2NM 3200 ASL
PRO	Avoid NE dep for noise abatement



CANADA WATER AERODROME SUPPLEMENT

Effective 0901Z 24 March 2022 to 0901Z 20 April 2023

AERODROME/FACILITY DIRECTORY B175

PRINCE RUPERT / DIGBY ISLAND BC

CAN6

REF	N54 19 W130 24 3W 19°E (2013) UTC-8(7) Elev 00' A5013
OPR	Prince Rupert Aprt Authority 250-624-6274 Reg
PF	B-1, 3(ltd hrs) C-2,3,4,5,6 on Kaien Island
FLT PLN	FC Kamloops 866-WXBRIEF (Toll free within Canada) or 866-541-4101 (Toll free within Canada & USA)
SERVICES	S 7 1600-0345Z†
A/D DATA	Water A/D within Prince Rupert CZ. Tidal range 26'. Tidal current 3-7 kts.
COMM	RCO Pacific rdo 123.275 (FISE) 126.7 (bcst) MF tfc 122.5 irregular shape see Prince Rupert VTPC 3100 ASL (CAR 602.98)
NAV	NDB PRINCE RUPERT PR 218 (M) N54 15 48 W130 25 26
PRO	See Prince Rupert VTPC. ARRIVAL: Rpt by inbd call-up pt on tfc freq and advs routing and destn. Remain on tfc freq until landed. DEPARTURE: Advs obd rte and remain on tfc freq until clear of inbd call-up points.
CAUTION	Logs & deadheads hazardous. Extv boat tfc in area. Land A/D 2.4NM SW.



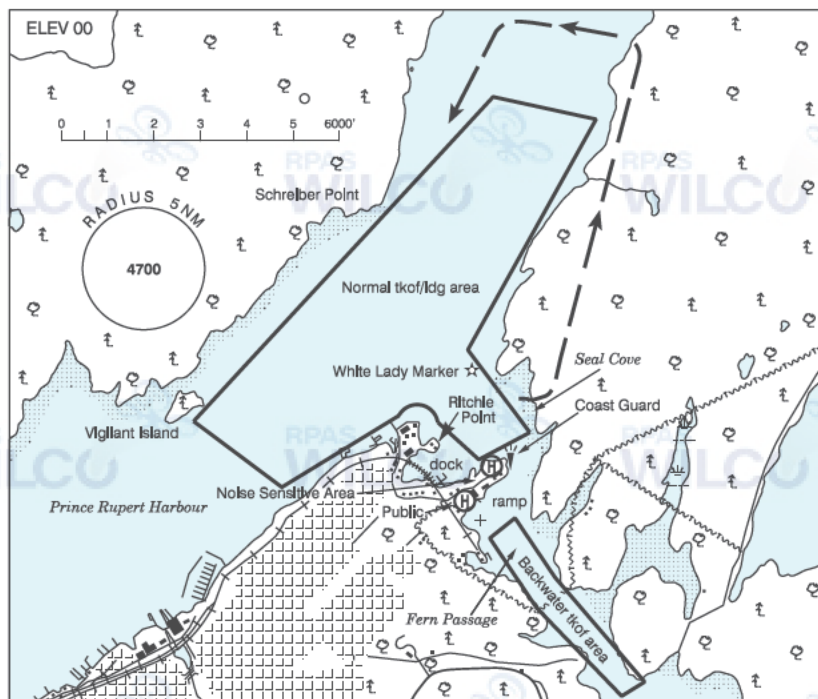
CANADA WATER AERODROME SUPPLEMENT

Effective 0901Z 24 March 2022 to 0901Z 20 April 2023

B176 AERODROME/FACILITY DIRECTORY

PRINCE RUPERT / SEAL COVE BC

CZSW



REF	N54 20 W130 17 Adj NE 20°E (2012) UTC-8(7) Elev 00' A5013
OPR	Seal Cove Airport Society 250-624-2321 Reg
PF	A-1,3 C-2,4,5,6
CUST	AOE/15 888-226-7277
FLT PLN	FIG Kamloops 866-WXBRIEF (Toll free within Canada) or 866-541-4101 (Toll free within Canada & USA)
SERVICES	Avbl May-Sep 15-04Z±. Oct-Apr daylight hrs only. Callout chgs may apply. After hrs svcs call 250-624-1737.
FUEL	100LL
S	1,2,3,4,5
A/D DATA	Tidal range 26', current 2-3 kt. Floats & ramp. Win: Ocsl 3' swells & chop. Sum: Frequent glassy water.
DOCKS	Mooring fees.
COMM	RCO Pacific rdo 123.275 (FISE) 126.7 (bcst) MF ftc 122.5 irregular shape see Prince Rupert VTPC 3100 ASL (CAR 602.98)
NAV	Nav aids unmonitored when FSS clsd. NDB PR 218 (M) N54 15 48 W130 25 26

BRITISH COLUMBIA

AERODROME/FACILITY DIRECTORY

PRINCE RUPERT BC

CYPR

REF	N54 17 09 W130 26 41 5WSW 19°E (2013) UTC-8(7) Elev 116' A5013 LO1 HI2 HI3 CAP	
OPR	Prince Rupert Aprt Authority 250-624-6274 1645-2400Z± Cert	
PF	A-1,3 B-2 C-2,4,5,6 Sked ferry svc to city found online, sked subject to change without ntc.	
CUST	AOE/15 888-226-7277	
FLT PLN		
FIC	Kamloops 866-WXBRIEF (Toll free within Canada) or 866-541-4101 (Toll free within Canada & USA)	
WX	METAR AUTO H24 (see COMM) TAF H24, issue times: 01, 07, 13, 19Z. WxCam	
SERVICES		
FUEL	JA-1 1645-2400Z±, O/T 250-975-1362, call out chg plus cost of water taxi. Hrs subject to change, ctc supplier for current sked 778-645-0401	
RWY DATA	Rwy 13(132°)/31(312°) 6000x150 ASPH Rwy 31 down 0.56% first 3531'	
RWY CERT	Rwy 13 RVR 1200(1/4sm)/Rwy 31 RVR 1200(1/4sm) AGN IV	
RCR	Opr Win maint 1645-2400Z±. O/T 4 hrs PN cost recovery. CRFI, PLR/PCN	
LIGHTING	13-AN (TE HI), 31-AO (TE HI) P2 ARCAL-122.5 type K	
COMM		
RCO	Pacific rdo 123.275 (FISE) 126.7 (bcst)	
MF	ffc 122.5 irregular shape see Prince Rupert VTPC 3100 ASL (CAR 602.98)	
PAL	Vancouver Ctr 133.675	
AWOS	128.575	
NAV		
NDB	PR 218 (M) N54 15 48 W130 25 26	
DME	IPR 109.7 Ch 34 N54 17 26 W130 27 02 (91')	
ILS	IPR 109.7 (Rwy 13) LOC reliable only within 10° either side of centreline.	
PRO	Rgt hand circuits Rwy 13 (CAR 602.96). See VTPC.	
CAUTION	High gnd to 295 ASL adj to eastern edge of rwy 1200' fr centreline. Trees to 100 ASL 300' W of rwy centreline.	